

F . T . M
Technologies

***A complete range of mobile air filtration and
purification solutions
for industrial and hostile environments***



***The best of the
equipment for your
workshops***

*Standard and custom equipment including all the benefits of a genuine manufacturer capable of adapting to your production needs.
Air filtration is indispensable in practically all sectors of activity: automotive, aerospace, electrical engineering, electronics, railway engineering, computing, printing, jewellery, medical, defence, telecommunications...*

A range of autonomous and mobile filtration hoods



HI 8F filtration mini-hood

Filtration mini-hood:

Small and light, it can be easily removed from one workstation to another.

Filtration 240 m³/h

- Ref : HI 8 F (fixed flow)
 - Ref : HI 8 V (Variable flow)
- It is possible to equip it with an articulated extraction arm. BHI 8.
- Filters: Refer to filters chart



HI 8F filtration mini-hood with an articulated extraction arm

	HI 8F	HI 8V
Power supply	230 V / 50 Hz	230 V / 50 Hz
Capacity	85 W	85 W
Dim. : L x W x H mm	240 x 300 x 200	240 x 300 x 220
Weight	2,5 kg	2,5 kg
Flow	Fixed: 240 m ³ /h	Variable: from 0 to 240 m ³ /h



HI 1P hood with visor

Filtration Hood with visor:

This hood is just the size of a briefcase and is very light and easy to handle. With this hood, it is possible to change workstation very easily.

It is particularly well-suited to work with volatile products. It offers an entire facial protection.

Product ref.: Hood HI 1P

Filters: Refer to filters chart



HI 1P hood with visor, you can observe the facial protection

	HI 1P
Power supply	230 V / 50 Hz
Capacity	320 W
Dim. : L x W x H mm	350 x 500 x 470
Weight	9 kg
Variable flow	From 50 to 450 m ³ /h
Integrated lighting	Yes
Backward air extraction	Yes Ø 125 mm



Suitcase hood HI 3P

Suitcase hood:

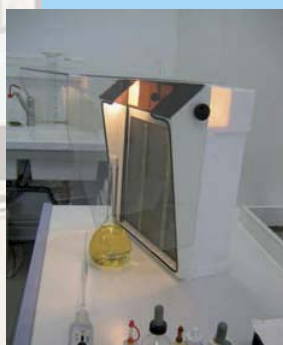
Known as the "suitcase" hood because of its ease to be moved, it adapts to the different needs: varnishing, spraying, welding fumes extraction etc.

Product ref.: HI 3P

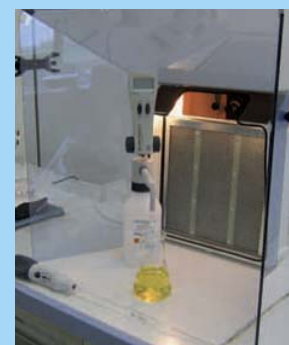
This model can be equipped with 2 kinds of visor which allow to channel the air flow:

- Small visor ref. VHI 3PP dim. : L x W x H : 350 x 200 x 430
- Large visor ref. VHI 3GP dim. : L x W x H : 610 x 610 x 320

Filters: Refer to filters chart

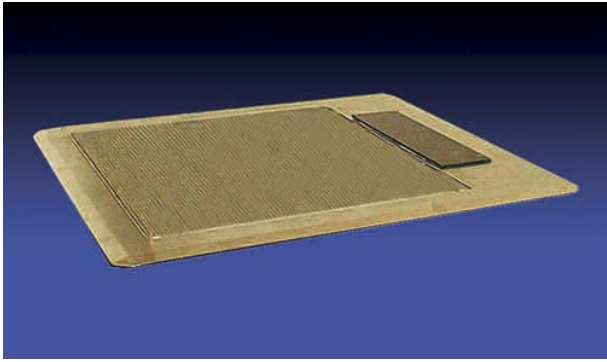


Small visor, VHI 3PP
L x W x H : 350 x 200 x 430



Large visor VHI 3GP
L x W x H : 610 x 610 x 320

	HI 3P
Power supply	230 V / 50 Hz
Capacity	320 W
Dim. : L x W x H mm	500 x 200 x 430
Weight	9 kg
Variable flow	from 50 to 450 m ³ /h
Integrated lighting	Yes
Backward air extraction	Yes Ø 125 mm



Built-in hood HI 2P with extraction by the bottom

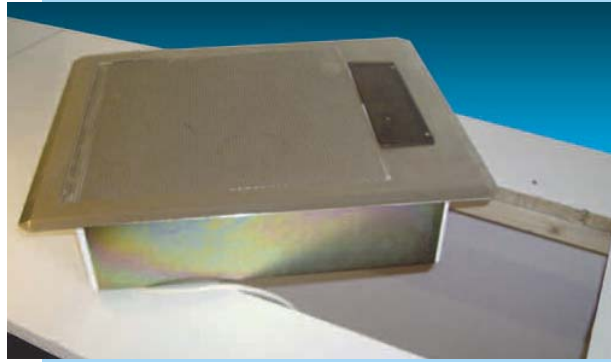
Built-in hood, extraction by the bottom:

This model has been designed to be built-in in the workstation, and is particularly well-suited for heavy fumes, dust and solvents. The dimensions needed for it to

be built-in are 350 x 420 mm.

- Product ref.: HI 2P

Filters: Refer to filters chart



Built-in hood, dimensions to be built-in 350 x 420 mm

	HI 2P
Power supply	230 V / 50 Hz
Capacity	270 W
Dim. : L x W x H mm	511 x 417 x 130
Weight	9 kg
Integrated lighting	-
Variable flow	From 50 to 450 m
Backward air extraction	Yes Ø 125



Multi-workstation hood HI 4P4S



Multi-workstation HI 4P4S in use in a laboratory

Multi-workstation hood:

This exceptional model combine an easy mobility and can provide extraction for up to 6 different pollution sources, depending on your needs.

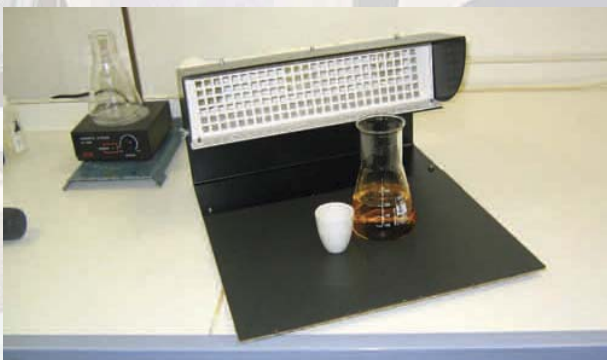
The ringed PVC pipes of diameter 75 or 50 mm for the link with extraction arms and accessories are provided.

- Product ref.: HI 4P4S hood (4 extraction outlets Ø 75 mm).

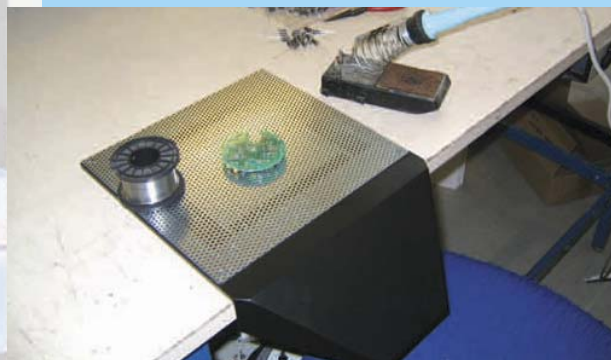
- Product ref.: HI 4P6S hood (6 extraction outlets Ø 50 mm).
Accessories: B80, blanking cap for HI 4P4S and B50, blanking cap for HI 4P6S.

Filters: Refer to filters chart

	HI 4P4S	HI 4P6S
Power supply	230 V / 50 Hz	230 V / 50 Hz
Capacity	270 W	270 W
Dim. : L x W x H mm	350 x 200 x 430	350 x 200 x 430
Weight	9 kg	9 kg
Variable flow	From 50 to 450 l/m	From 50 to 450 l/m
N° of extraction inlets	4	6
Ø inlets (mm)	75	50
Backward air extraction	Ø 125	Ø 125
Ringed PVC pipe	4 x 3 m in Ø 75	4 x 3 m in Ø 50



AP1 extraction plate



AP2 extraction plate

AP1 extraction plate:

This model operates in conjunction with the multi-workstation hood HI 4P6S and is connected thanks to 3 pipes of diameter 50 mm for a better dispersion of the extraction. It is used to capture heavy solvents, fumes, and has an adjustable visor to channel the flow depending on your needs. It just has to be laid on the workstation, no installation is needed. Dim. : L x W x H mm : 410 x 350 x 200.

AP2 extraction plate:

This model operates in conjunction with the multi-workstation hood HI 4P4S and is connected with a pipe of diameter 75 mm. It is used to capture heavy solvents and fumes. The extraction plate AP2 permits to have a clean and completely free workstation when it is imposed. Its low thickness (8 mm) doesn't bother while working. The AP2 has just to be laid on the workstation, no installation needed. Dim. : L x P x H mm : 250 x 210 x 8.



Extractor booth HI 5V/P



Custom realization: double extractor booth

Extractor booth:

This extractor booth provides complete workstation coverage and is intended particularly for handling chemicals, varnishing and spraying. Extraction airflow is variable from 50 to 450 m/h. The robust cabinet is not

deformable and is very easy to maintain. It is delivered in kit with a notice of assembly.

Product ref.: HI 5V/P
Safety glass thickness 6 mm
Filters: Refer to filters chart

	HI 5V/P
Power supply	230 V / 50 Hz
Capacity	320 W
Dim. : L x W x H mm	800 x 700 x 700
Weight	33 kg
Integrated lighting	Yes
Variable flow	From 50 to 450 m ³ /h
Backward air extraction	Yes Ø 125

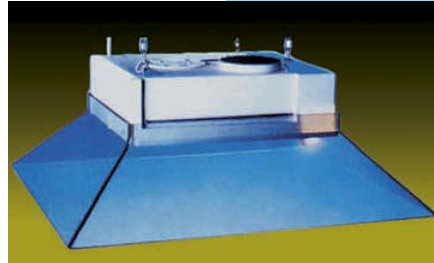
Overhead hood:

Hood to be hovered which corresponds to important fumes and solvents emissions. It also allows a complete clearance of the workstation.

Product ref.: HI 9P

Suspension chain, ref.: chain= 1 linear meter

Filters: Refer to filters chart



Overhead hood HI 9P

	HI 9P
Power supply	230 V / 50 Hz
Capacity	320 W
L x W x H mm	720 x 640 x 300
Weight	11 kg
Integrated lighting	Yes
Variable flow	From 50 to 450 m ³ /h
Backward air extraction	Yes Ø 125

Filters to use:

■ For HI8F or HI8V:

- FA2: fumes, dust
- PF2: protection pre-filter
- FC2: solvents, gas and fumes

■ For all the other models:

- PFP 1: protection pre-filter
- FCP 1: solvents, gas and fumes

- FPP 1: evacuation outside
- FAP 1: dust

Accessories: articulated extraction arms for mobile multi-workstation hood Ø 75 mm



Extraction arm equipped with a rectangular nozzle, blanking cap and a work surface console



3 - Extraction arm, length 770 mm

These innovative articulated extraction arms are ideally suited for mobile or temporary installations. They are adjustable by hand and can be positioned very easily thanks to their conception based on segments. Their articulated multi-section design means that they can be shortened or lengthened to suit perfectly each application. Their technical possibilities are enriched by the large range of nozzles, to be chosen in function of the specificities of your needs. The range includes several models with extraction nozzles, work surface consoles and diameter brackets. The outer diameter is 74.5 mm and the minimum curve radius is 146 mm.



1 - Rectangular nozzle

- 770 mm long arm, without nozzle with work surface bracket and 4 mounting screws included. Connection diameter: 75 mm. Ref: Standard version (blue) 89220/226 Ref: ESD version (black) 89320/226

- Rectangular nozzle 157 mm x 93 mm Ref: Standard version (orange) 81.204 Ref: ESD version (black) 81.304

- Long nozzle 150 mm Ref: Standard version (orange) 81.205 Ref: ESD version (black) 81.305.

- Round nozzle Diameter 119 mm Ref: Standard version (orange) 81.203 Ref: ESD version (black) 81.303

- Table bracket or shelf Attached by 2 screw clamps Ref: Standard BF version Ref: ESD BFESD version

- Extraction regulation blanking gate Ref: Standard version 81.208 Ref: ESD version 81.308

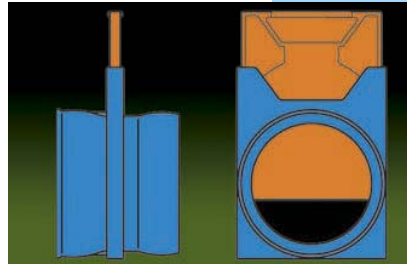
- Additional sections to extend the arm 9 articulated sections with a total length of 301 mm Ref: Standard BF version Ref: ESD BFESD version



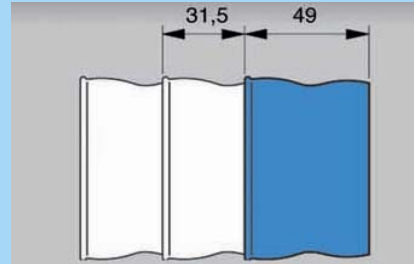
1 - Round nozzle



1 - Long nozzle



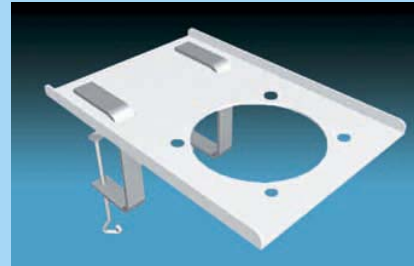
2 - Extraction regulation blanking cap



3 - Technical dimensions



3 - Additional segments

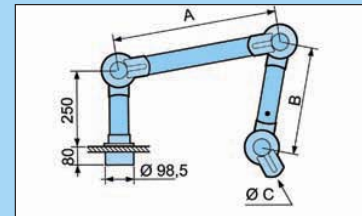


4 - Work surface bracket

Accessories: Extraction arms with friction articulations for fixed or mobile multi-workstation hood Ø 50 or 75 mm



A preview of the range



3-articulation arm - ref. B 1000-50 / ESD

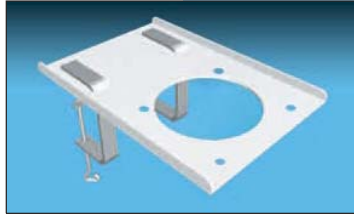
These articulation arms form a comprehensive extraction system with a complete range of extraction and connection accessories for attachment to a work surface, wall or ceiling.

As a premium quality, specialist manufacturer we fit our friction joint articulations with ball bearings rotating through 360°. The accessories are available in two diameters: 50 and 75 mm for our "Standard" and "ESD" ranges. A single 75 mm diameter is available for the "PP" range in polypropylene. In addition, all the extractor arms are available in a variety of different lengths covering all possible configurations. Our range is particularly suitable for fixed installations.

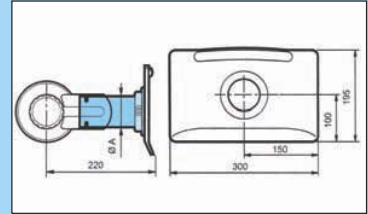
References		Dim. (mm)		
Standard	ESD	A	B	Ø C
B1000-50	ESD	400	300	50
RM50				
B1000-75	ESD	400	300	75
RM75				

A vast choice of fitting accessories:

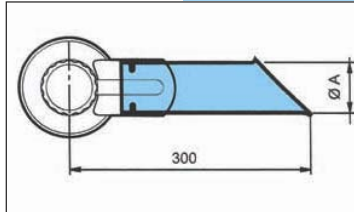
- End arm with 1 articulation
- Connection arm with 2 articulations
- Connection arm with 3 articulations
- Extraction nozzle
- Flat extraction hood
- Cupola extraction hood
- Quadrangle extraction hood
- Duck bill nozzle
- A complete range of connection consoles
- Detailed documentation by request



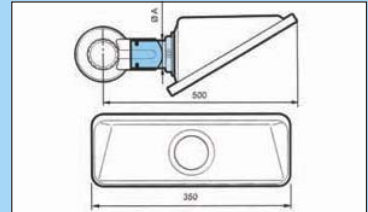
Work surface flexible attachment console
Flexible console designed for R1000-50 RM50 or B1000-75 RM75. It is intended to be mounted on a work surface or a shelf. Supplied complete with two screw clamp jaws.



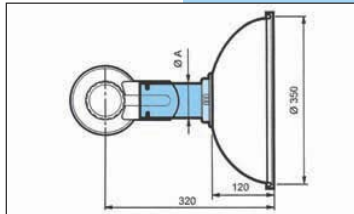
Flat extraction hood ref: PH 300-50 for $\varnothing 50$ mm or ref: PH 300-75 for $\varnothing 75$ mm. We have designed the flat hood to optimise the field of extraction action without obstructing the user's view. Perfectly adapted to work tables.



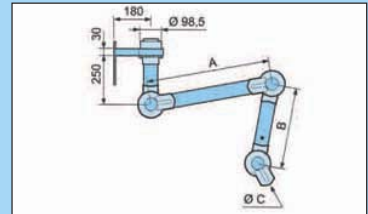
Extraction nozzle ref: S 300-50 for $\varnothing 50$ mm or ref: S 300-75 for $\varnothing 75$ mm. For use in arduous environments for effective positioning close to the pollutant source without obstructing the field of vision on the work surface.



Quadrangle extraction hood ref: SH 350-50 for $\varnothing 50$ mm or ref: SH 350-75 for $\varnothing 75$ mm. This model is used for upward or lateral gas extraction from the work area. Its broad surface area ensures highly efficient extraction of volatile gases without obstructing the user's view.



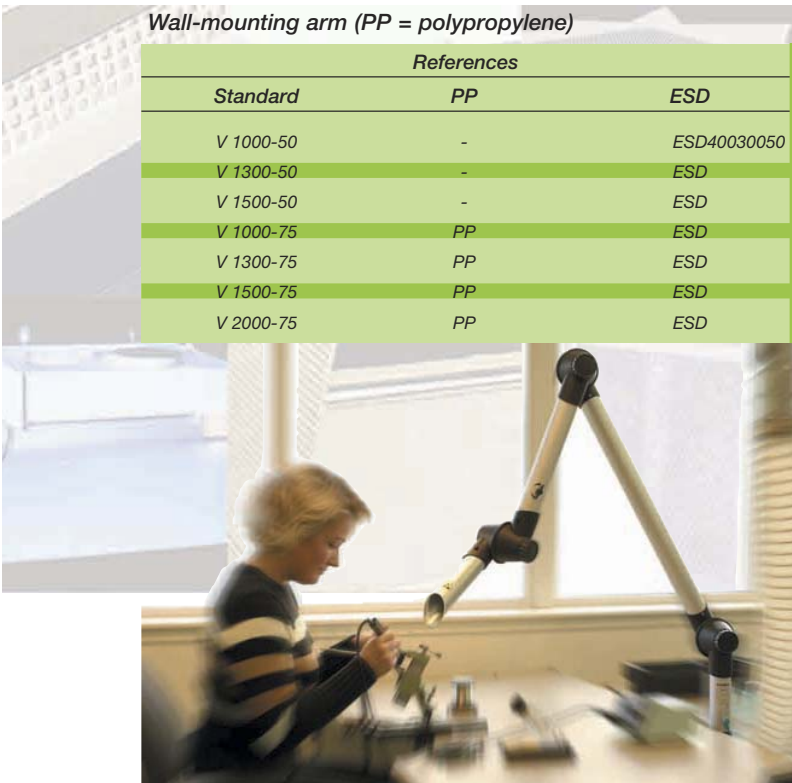
Cupola extraction hood ref: K 350-50 for $\varnothing 50$ mm or ref: K 350-75 for $\varnothing 75$ mm. The cupola extraction hood is designed to envelope the polluting source as closely as possible without obstructing the user's view.



Wall-mounting arm ref: V 1000-50 for $\varnothing 50$ mm or ref: V 1000-75 for $\varnothing 75$ mm. This is a pre-assembled system with an attachment console for wall mounting. (extraction cupola and nozzle not included).

Wall-mounting arm (PP = polypropylene)

Standard	References		Dim. (mm)		
	PP	ESD	A	B	Ø C
V 1000-50	-	ESD40030050			
V 1300-50	-	ESD	550	450	50
V 1500-50	-	ESD	750	450	50
V 1000-75	PP	ESD	400	300	75
V 1300-75	PP	ESD	550	450	75
V 1500-75	PP	ESD	750	450	75
V 2000-75	PP	ESD	1000	650	75



Malaysia - Thailand

ABSOTEC CO., LTD.
70/26 Moo 5, Lumlugga Klong 6, Bungkumploy,
Lumlugga, Pathumthani 12150 Thailand
Tel: +66 (0) 2532 6103
Tel: +66 (0) 2178 2553
Fax: +66 (0) 2532 6102
E-mail: enquiry@absotecthailand.com
URL: <http://www.absotecthailand.com>
URL: <http://www.greeninnotec.com>